

2<sup>nd</sup> Annual  
**GI ReConnect**

**June 10-11, 2022**

**HILTON SANTA FE BUFFALO THUNDER  
SANTA FE, NEW MEXICO**

Accredited by:



This activity is supported by an educational grant from Abbvie, Ferring Pharmaceuticals, Inc., Janssen Biotech, Inc., administered by Janssen Scientific Affairs, LLC, Phathom Pharmaceuticals, Inc., and Salix Pharmaceuticals.

Provided by:



# Decision Support Tools for IBD

Parambir S. Dulai, MD

Northwestern University

# Disclosure Statement

## **Disclosure Statement**

All faculty and staff involved in the planning or presentation of continuing education activities provided by the University of Cincinnati are required to disclose to the audience any real or apparent commercial financial affiliations related to the content of the presentation or enduring material. Full disclosure of all commercial relationships must be made in writing to the audience prior to the activity.

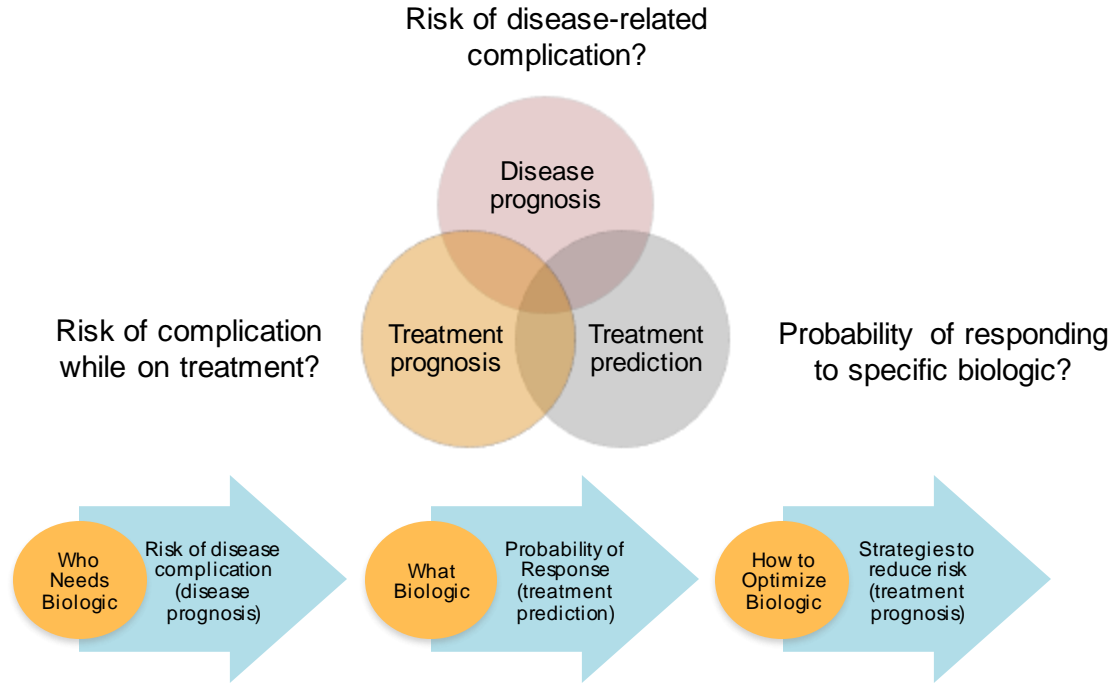
All additional planning committee members, the University of Cincinnati staff and the Gi Health Foundation staff have no relationships to disclose.

# Disclosures

- Research Support: Takeda, Pfizer,
- Consulting: Johnson and Johnson, Gilead, Lilly, BMS, Novartis, Pfizer, Takeda
- Stock options: DigbiHealth
- Licensing Royalties: PreciDiag

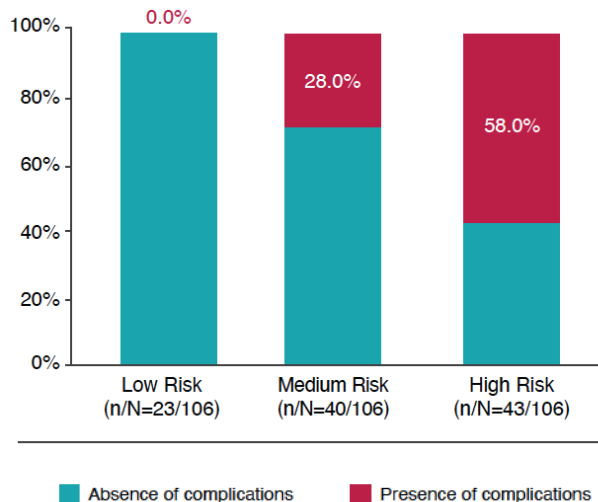
# What Is the Ideal Decision Support Tool?

## Individualized Prognosis and Goals



# CDPATH – Prediction of Disease Risk

## CDPATH performance characteristics



## CDPATH is being offered free of charge for eligible patients<sup>1</sup>

As part of the program, the costs of CDPATH<sup>®</sup> will be covered as long as patients meet the following eligibility criteria:



Adult CD patients (≥18 years old) diagnosed within the last 10 years



Patients on a commercial healthcare plan or uninsured<sup>2</sup>



Patients who have not experienced serious CD complications, defined as bowel stricture, internal penetrating disease, or non-perianal surgery (bowel resection or stricturoplasty)

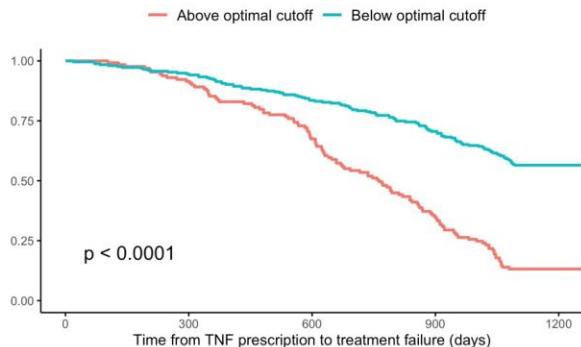


Blood draw taken at a physician's office or participating lab

Practice Implications: Point of care decision support tool available to identify Crohn's patients at greatest risk for disease complications within first 3 years of diagnosis, guiding use of biologic therapy

# Blood Protein Panel for Anti-TNF in Early CD

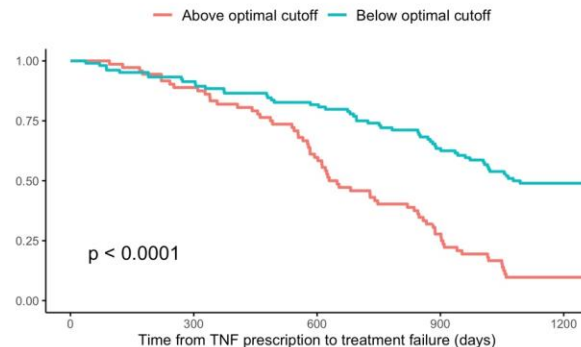
## RISK COHORT



Number at risk

Above optimal cutoff	129	118	87	45	14
Below optimal cutoff	255	241	213	180	118

## OSCCAR COHORT



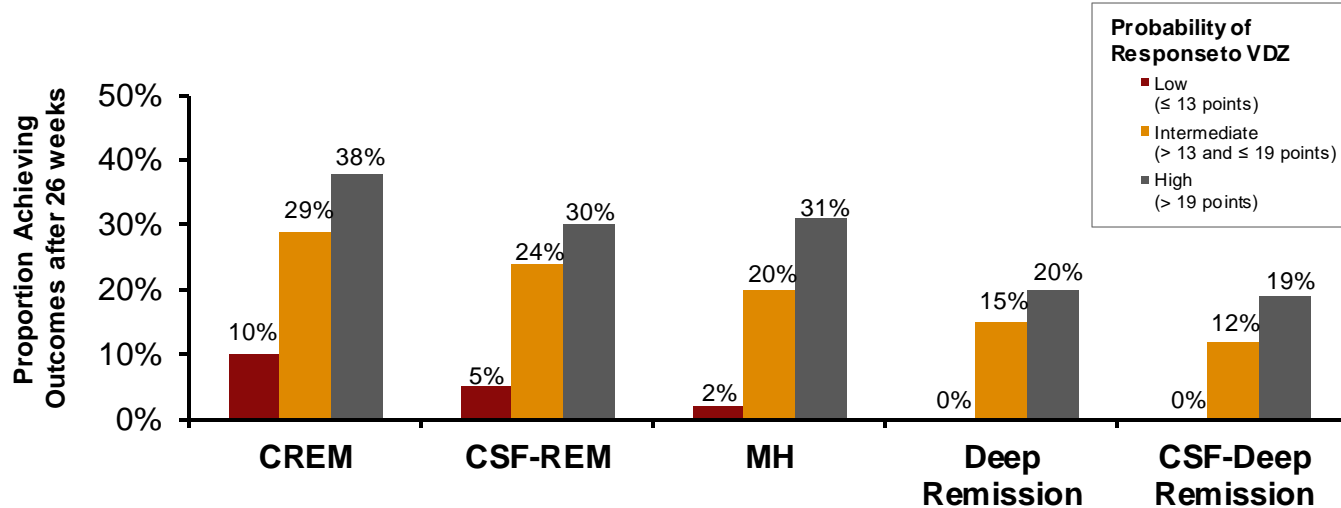
Number at risk

Above optimal cutoff	72	64	43	20	6
Below optimal cutoff	104	95	85	66	43

Practice Implications: Blood biomarker panel identifies CD patients likely to benefit from antiTNF therapy and could be paired with CD-PATH to guide combined disease risk and treatment response prediction in early CD

# Crohn's Disease Vedolizumab Clinical Decision Support Tool

No prior bowel surgery	No prior TNF $\alpha$ -antagonist	No prior fistulizing disease	Baseline albumin	Baseline CRP
+ 2 points	+ 3 points	+ 2 points	+ 0.4 points per unit (g/L)	- 0.5 points if 3.0-10.0 mg/L - 3.0 points if > 10 mg/L



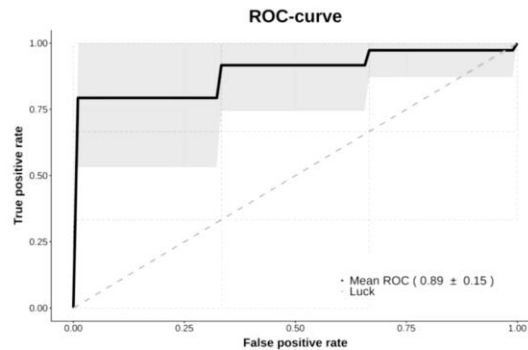
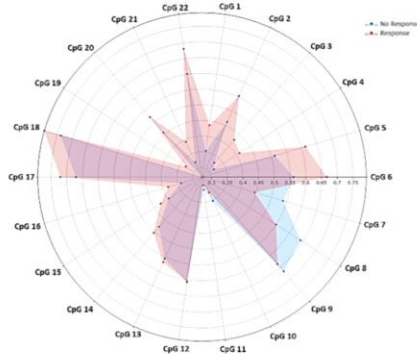
Practice Implications: Point of care decision support tool identifies patients not likely to respond to Vedolizumab



# Peripheral Blood DNA Methylation Biomarkers Accurately Predict Clinical – And Endoscopic Response to Vedolizumab in a Real-Life Cohort of CD Patients

Study aims to identify epigenetic markers in CD patients and to develop and validate predictive algorithms using these markers

Combination of **22 CpG-markers** predict **response** to vedolizumab with **high** (AUC 0.89) performance upon validation

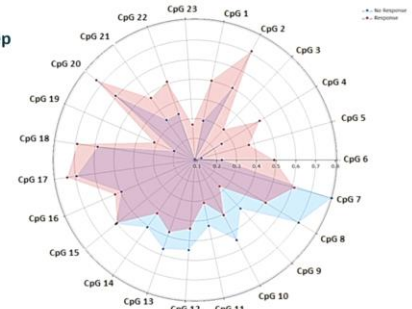


## Deep response

A combination of **23 CpG-markers** predicted **deep response** with **high** (F1-score 0.8) performance upon validation

Multiple CpGs associate with **Ly6G5C gene**:

- Member of Ly-6 family
- Reported to be involved in T-cell activation<sup>1</sup>
- LY-6C shown to signal integrin activation needed for CD8+ T-cell homing to lymph nodes *in vivo*<sup>2</sup>



Practice Implications: Novel biomarker panels accurately predict response or deep remission to vedolizumab respectively and could be added to already available decision support tools.

# Ustekinumab Crohn's Model

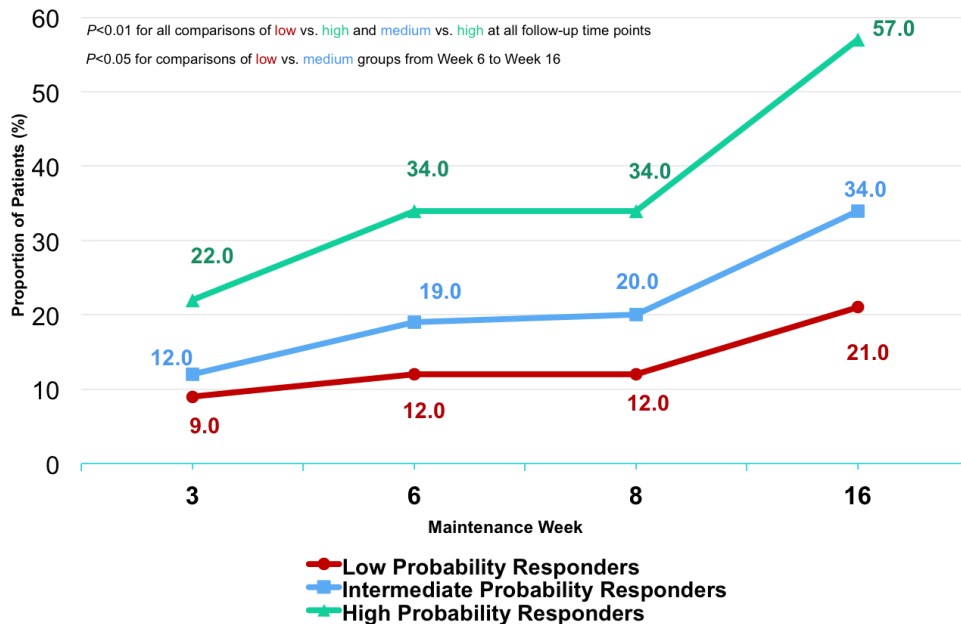
## Variable Included in the CDST

- No prior TNF-antagonist exposure (+ 2 points)
- No prior bowel surgery (+ 2 points)
- No active fistulizing disease at baseline (+ 1 point)
- No current or prior smoking history (+ 1 point)
- Baseline albumin:
  - 3 pts:  $\leq 25$  g/L
  - 1 pts:  $> 25$  to  $\leq 32$  g/L
  - 0 pts:  $> 32$  to  $\leq 39$  g/L
  - + 1 pts:  $> 39$  to  $\leq 43$  g/L
  - + 3 pts:  $> 43$  g/L

Low probability responders ( $\leq 1$  points)

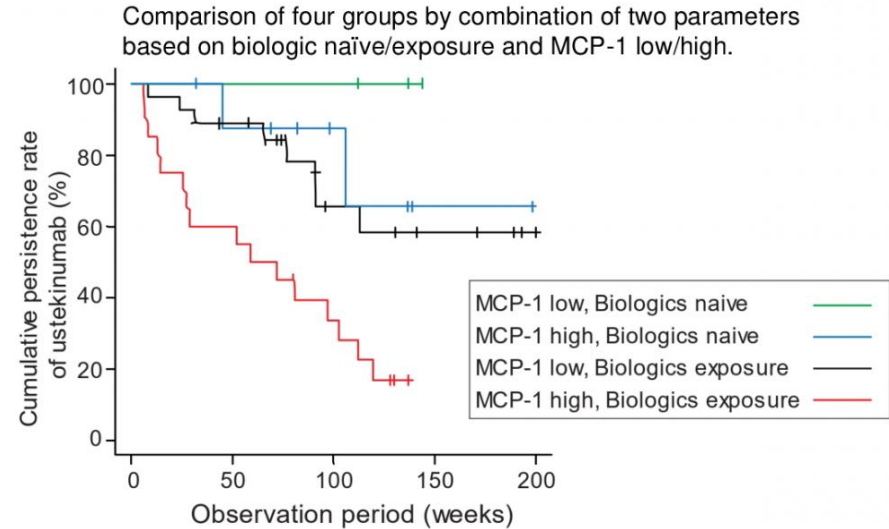
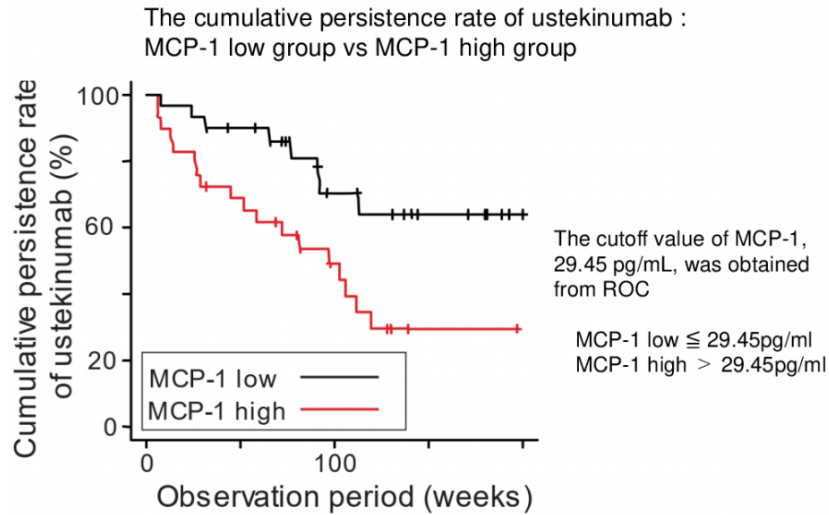
Intermediate probability responders  
(2-4 points)

High probability responders ( $\geq 5$  points)



Practice Implications: Point of care decision support tool identifies patients likely to respond to Ustekinumab

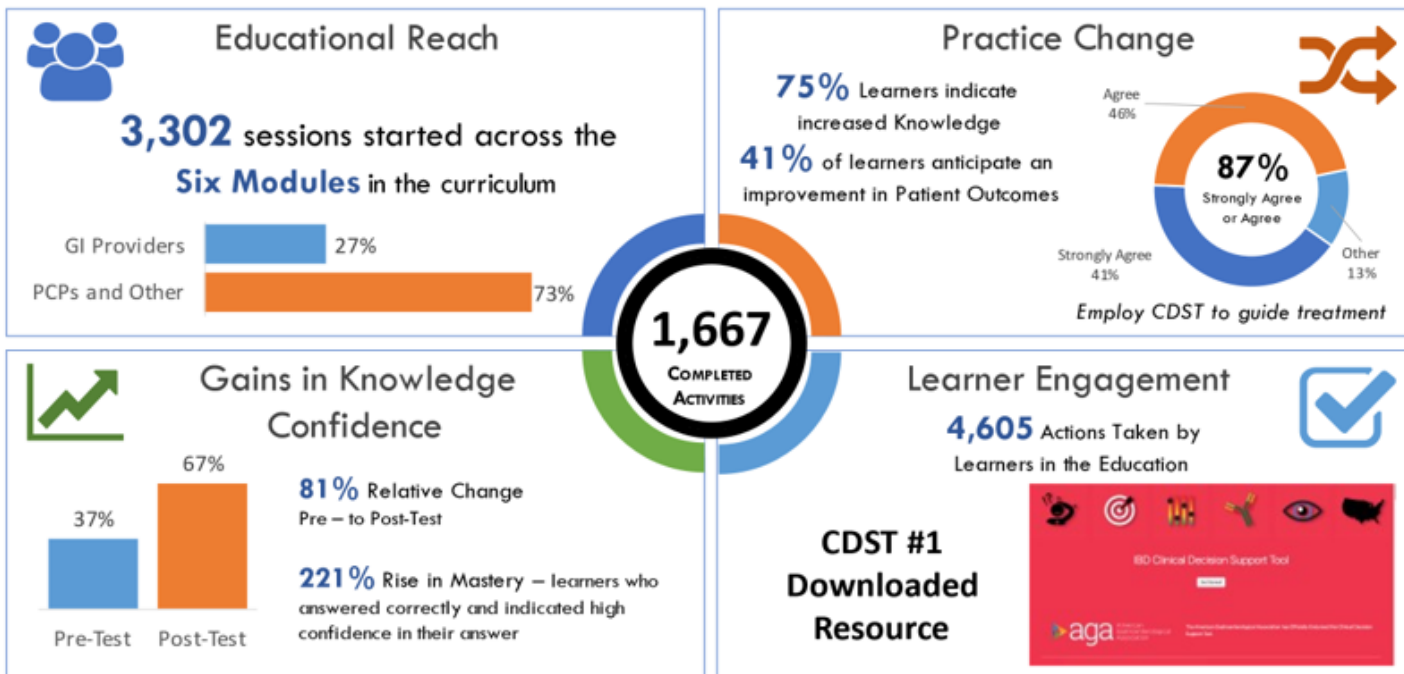
# Biomarker Predictor of Ustekinumab



Practice Implications: Single serum biomarker could be added to already available decision support tools to optimize prediction of response to Ustekinumab in Crohn's disease.

# CME Platform for Decision Support

## US IBD Health Outcomes Consortium CME Initiatives



# Practice Implications



Easy-to-use clinical decision support tools available to guide biologic choice



Web platform improves decision making



Emerging biomarker panels may further augment personalized care in IBD